

An architectural rendering of a residential development. The scene features several modern, single-story houses with dark roofs and light-colored siding. A paved walkway or driveway curves through the center of the development, flanked by green lawns and young trees. The sky is overcast with grey clouds. The overall aesthetic is clean and contemporary.

# Dresser Woods

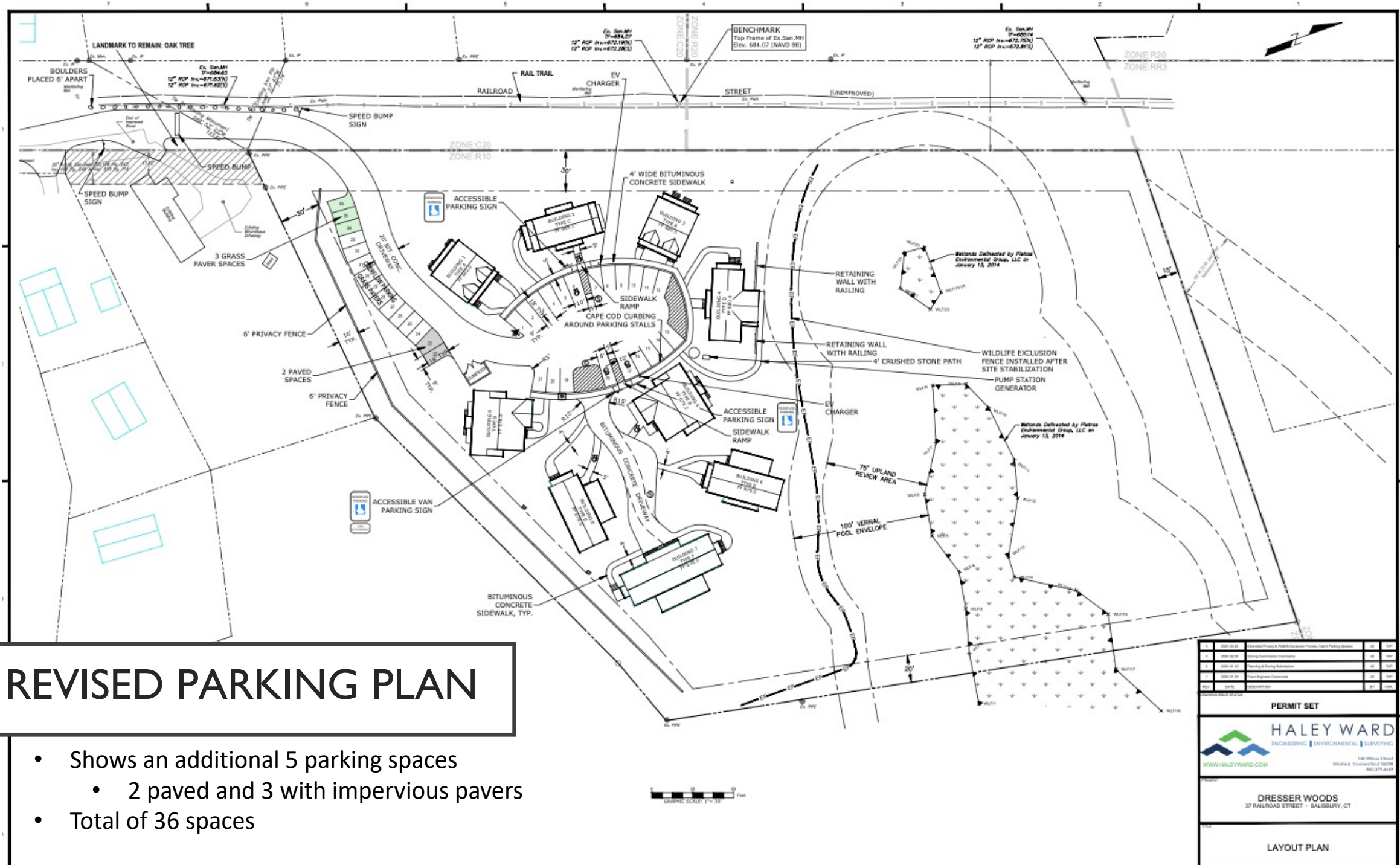
## *37 Railroad Street*

Salisbury Planning & Zoning Commission  
Continued Public Hearing  
April 1, 2024



# REVISED PARKING PLAN

- Shows an additional 5 parking spaces
  - 2 paved and 3 with impervious pavers
- Total of 36 spaces



NO.	DATE	DESCRIPTION	BY	CHKD.
1	2024.01.15	Initial Design & Permitting Review	HW	HW
2	2024.01.20	Final Design Review	HW	HW
3	2024.01.25	Final Design Approval	HW	HW
4	2024.02.01	Final Design Approval	HW	HW
5	2024.02.05	Final Design Approval	HW	HW

**PERMIT SET**

**HALEY WARD**  
ENGINEERING | ENVIRONMENTAL | SURVEYING  
WWW.HALEYWARD.COM  
140 Willow Street  
Wethersfield, CT 06092  
860.379.4444

**DRESSER WOODS**  
37 RAILROAD STREET - SALISBURY, CT

**LAYOUT PLAN**

