

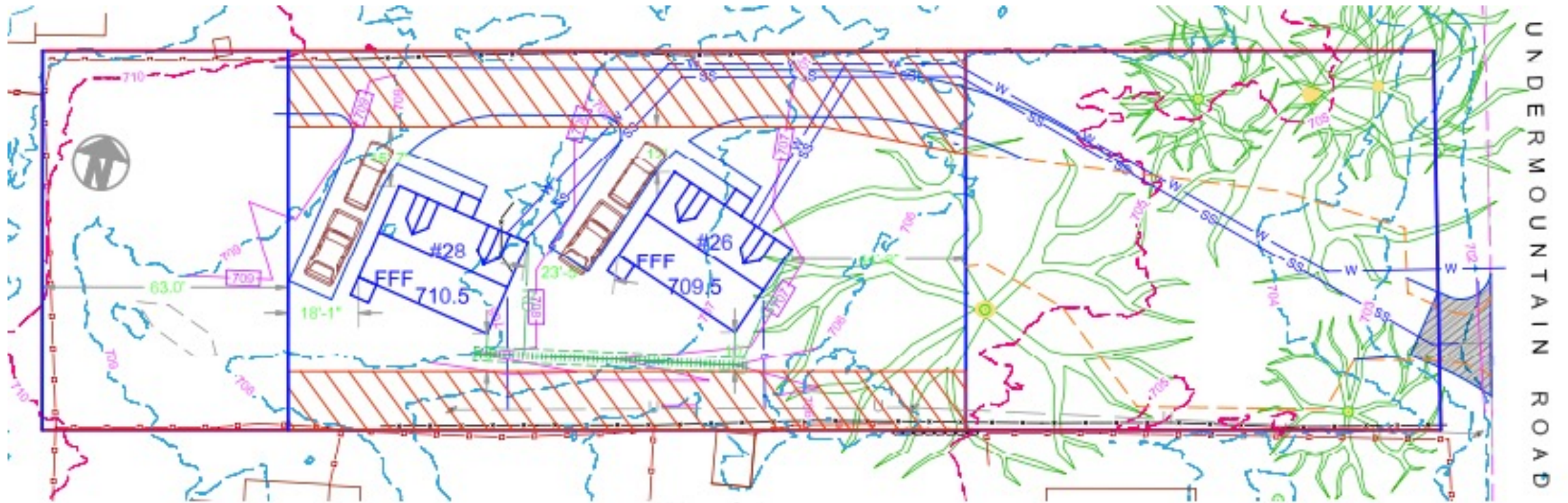
# Salisbury Housing Trust

26 & 28 Undermountain Road

July 1, 2024

Planning & Zoning Commission meeting

Presented at the last meeting:



# Updates:

- At last P&Z meeting- viewshed easement over back of lot seemed to be important to P&Z; retaining the parking area did not seem to be a priority; protecting trees seemed to be a priority
- Additional site visit with town's tree warden:
  - Moved homes further away from trees
  - Moved driveway away from northern parcel boundary due to concerns about trees on neighboring lot

- **Each of these options comply with the Multi-family housing overlay zone requirements.**
- Top two options protect the trees as much as possible and have viewshed easement in back.
- “Option 2” retains street wall.
- Our understanding that if the town meeting approves donating this site to the Salisbury Housing Trust; parking will not be allowed on site as a “municipal use”.
- Town POCD and Affordable Housing Plan support this use of the site to create two affordable homes in Salisbury’s village center.

