

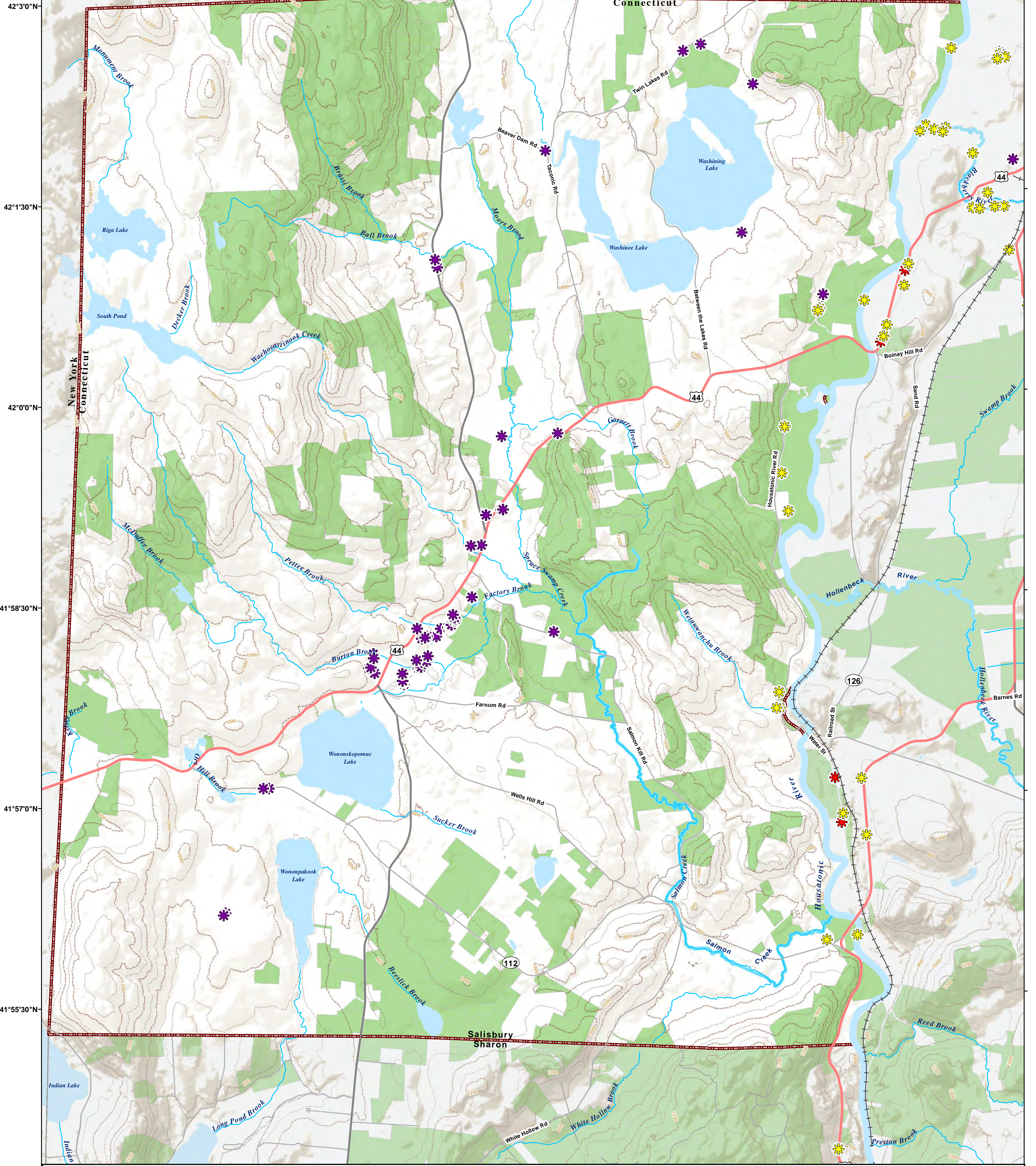
# Salisbury, Connecticut Japanese Knotweed Survey for the Housatonic River Commission



73°28'30"W      73°27'0"W      73°25'30"W      73°24'0"W      73°22'30"W      73°21'0"W

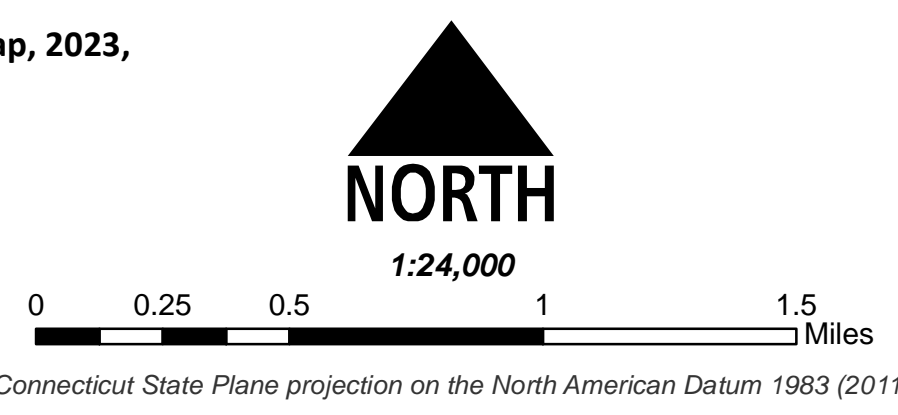
## Map Elements

- ✳ Knotweed Locations Summer 2023
- ✳ Knotweed Locations Summer 2022
- ✳ Previously Mapped Knotweed
- Watercourse
- Waterbodies
- 200 ft Contour (Labeled)
- 100 ft Contour
- Protected Lands



Data Sources:  
 Roads & Routes: Connecticut Department of Energy and Environmental Protection (CT DEEP) 2010  
 Town & State Boundaries: CT DEEP (2012)  
 Watersheds, Watercourses, Waterbodies & Housatonic River: USGS National Hydrography Database (2.1)  
 Japanese Knotweed Locations: NWCT Knotweed network Surveys (2018-2023)  
 Housatonic River Access Points: Housatonic Valley Association (HVA)-2014  
 Protected Lands: Litchfield Hills Greenprint & Housatonic Valley Association (2023)

Salisbury, CT Japanese Knotweed Survey Map, 2023, for the Housatonic River Commission compiled by HVA Map Department



Date: 7/31/2023  
 Map Prepared By:  
 Stacy Deming, GISP  
 GIS Manager  
 Housatonic Valley Association  
[www.hvatoday.org](http://www.hvatoday.org)  
 150 Kent Road South  
 Cornwall Bridge, CT 06754  
[hvamaps@gmail.com](mailto:hvamaps@gmail.com)  
 860.672.6678

41°54'0"N

41°55'30"N

41°57'0"N

41°58'30"N

42°0'0"N

42°1'30"N

42°3'0"N