

Salisbury Pathways Committee

Ninety Eighth Meeting

Date and Time: Monday, February 24, 2025, at 5:30 p.m.

Location: **Hybrid:** in-person in Town Hall, 1st floor, Fox Room, and on Zoom.

Present: *in-person:* Chris Williams, Natalia Smirnova, Gerry Stanton; Kathy Trahan, Pat Hackett, David Battista, Mike Virzi, Curts Rand. *Virtually:* Steven Cohen, Sunny Kim, Patrick Sullivan, John Gruber, John Hahn.

Minutes:

Call to order – 5:30 p.m.

1. Approval of the minutes for the meeting on January 27, 2025.
Approved unanimously.
2. TRIP grant –progress report.
 - David Battista, Senior Project Manager from Haley Ward engineering firm referred to plans the Committee looked over during 01/27/25 meeting. He explained that Rt 41 and 44 – the connector” section and Rt. 41 North section are in the Final Design stage and are ready to be presented to the DOT for the discussion of the next step. Next step: DOT Review. The time frame is a couple of weeks.
 - There are talks with Sarum Village to see if they allow for “cut through” their property at the corner of Cobble Street. Matt Kiefer was asked to survey one more time.
 - Gerry reported that he talked with Ms Patti Barry, property owner, and Ms Diana Bisselle, real estate listing agent, on February 24, 2025 to make them aware of the plans to build the sidewalk in front of their building. There are no complaints.
3. DEEP grant –
 - Pat Hackett was able to obtain the score card for our DEEP grant on 02/04/2025 from Kim Bradley, CT Trails and Greenways Program Coordinator, Bureau of Outdoor Recreation / Division of State Parks and Public Outreach, Connecticut Department of Energy & Environmental Protection. Our score is 92/130, which is in the “high” range. Our application was very competitive. We should look at it again, make it better at the sections where the score was lower, and re-apply. The Score Card is attached.
 - Curtis Rand reported that through COG he requested DOT for the Road Safety Audit. Now RSA is only done for intersections. Curtis requested the intersections near Salsbury School, Cobble Road near the bridge, and The Hotchkiss School. Curtis will let the Committee know when the RSA will be scheduled.
In addition to providing safety data, the RSA helps us justify applications for grants.
4. The sidewalk along Rt. 41 from Lakeville to The Hotchkiss School
 - Report on the conversation with the Hotchkiss School representatives on February 1, 2025
 - Kitty Kiefer and Natalia had a meeting with The Hotchkiss School representative regarding their vision for improving safety along Rt. 41, after which Natalia invited

- Michael Virzi, Director of Facilities to present their plan to this Committee.
- Presentation of the project by Michael Virzi, Director of Facilities, The Hotchkiss School.
 - Michael Virzi presented The Hotchkiss School's plan for sidewalk on Route 41 connecting the Hotchkiss School to existing sidewalk in Lakeville, thereby providing a safe walkway for pedestrians along the busy Route 41.
 - In particular, the sidewalk is planned on the West side of Route 41 from Lake Road to the existing sidewalk ending across from 90 Sharon Road in Lakeville. The length of the proposed sidewalk is 4,000 feet (or ¾ mile).
 - The preliminary design was done by Haley and Ward, and David Battista showed the plans and answered the questions. The preliminary design plans are attached.
 - Comments about this project were made by:
 - John Gruber, Hotchkiss School Trustee, who supported the project with the goal of increasing safety of pedestrians walking along busy and winding stretch of Rt 41. John re-iterated that the Trustees are very interested in addressing the safety issue. In addition, the connectivity with Lakeville as well as the partnership with the community is very important to the trustees.
 - John Hahn, Director of Strategic Initiatives, The Hotchkiss School, explained the vision of the school not only to increase the safety of pedestrians, but also to enhance walkability around the school with opportunity to connect the trail system with Bissell Woods. John was enthusiastic about the opportunity to partner with the Town for this project.
 - Chris Williams asked about the “separation” of the school from the public domain whereas the pedestrians can inadvertently enter the schools’ property and present a safety issue for students. John Hahn explained that currently the school is managing this successfully. With the construction of the sidewalk, which will start at the school’s property, there will be signs alerting pedestrians about the school’s property. However, the public is welcome to walk the trails, access the lake front, use the golf course, and, in general, the school is welcoming the community and wants to continue building a collaborative partnership.
 - Michael Virzi reported that The Hotchkiss School is prepared to fundraise for this project through their next fundraising cycle if the project moves along with the design and approval process.
 - Curtis Rand said that the Town will facilitate the approval process, apply for the Connectivity Grant, which is due in May, initiate the conversation with residents along the proposed route, and present the project to P&Z.
 - Curtis Rand said that the Town will provide sidewalk maintenance after completion.
 - The next steps are:
 - ✓ David Battista to meet with DOT to discuss ADA accessibility and specifications for traffic control and policy.
 - ✓ David Battista is to initiate the survey and enhance the engineering design with the survey input.
 - ✓ Chris Williams is to contact P&Z to get on their agenda for the 8-24 meeting.
 - ✓ Natalia and Kathy are to start working on the Connectivity grant. The 2017 Connectivity grant is wrapped up, so we can apply for a new one,

which is due in May.

5. Citizens Comments – none.
6. New Business – none.

The meeting was adjourned at 6:21 p.m.

Minutes respectfully submitted by Natalia V. Smirnova, Secretary, on March 3, 2025.



Natalia Smirnova <2014nataliasmirnova@gmail.com>

Fwd: CT Recreational Trails Funding - request for 2024 application criteria scores

prh@prhackett.com <prh@prhackett.com>

Mon, Feb 10, 2025 at 11:58 AM

To: Natalia Smirnova <2014nataliasmirnova@gmail.com>, Kathy Trahan <ktbox495@gmail.com>, Gerry Stanton <geraldstanton423@gmail.com>

For next meeting.....

From: Bradley, Kimberly <Kimberly.Bradley@ct.gov>**Sent:** Tuesday, February 4, 2025 10:08 AM**To:** prh@prhackett.com**Cc:** 'Chris Williams' <cwilliams@salisburyct.us>**Subject:** Re: CT Recreational Trails Funding - request for 2024 application criteria scores

Hi Pat,

Please find the attached score sheet for the 2024 CT Recreational Trails Grant application for the Salisbury Connector Trail. I am also happy to meet with you and discuss the outcome, you can use the link below my signature to set up a time to meet virtually.

You will see the score was within out High Ranking, the Town of Salisbury submitted two grants in the 2024 application round. This request was also above \$500,000, which for our CT Recreational Trail Grants require higher level of review from our finance division. There was discussion within the Greenway Council that CT DOT funding programs should be considered for this project as well.

Please let me know if you have any additional questions,

Kim Bradley

Kimberly Bradley

CT Trails and Greenways Program Coordinator

Bureau of Outdoor Recreation / Division of State Parks and Public Outreach

Connecticut Department of Energy & Environmental Protection

79 Elm Street, Hartford, CT 06106-5127

p: 860.424.3938 | m: 203.915.5201 | Kimberly.bradley@ct.gov



Connecticut
Department of Energy &
Environmental Protection

*Conserving, improving, and protecting our natural resources and environment;
Ensuring a clean, affordable, reliable, and sustainable energy supply.*

[CT Recreational Trails](#)

[Connecticut Greenways Council](#)



[Book time to meet with me](#)

[Quoted text hidden]



2024 CRTP ProposalsWorking (4).pdf
18K

PROJECT TITLE: Salisbury Trails Connector

Total Score = 92

APPLICANT: Salisbury
Project Type: Planning/Design; Construction

>90 High
 45 - 90 Medium
 0-45 Low

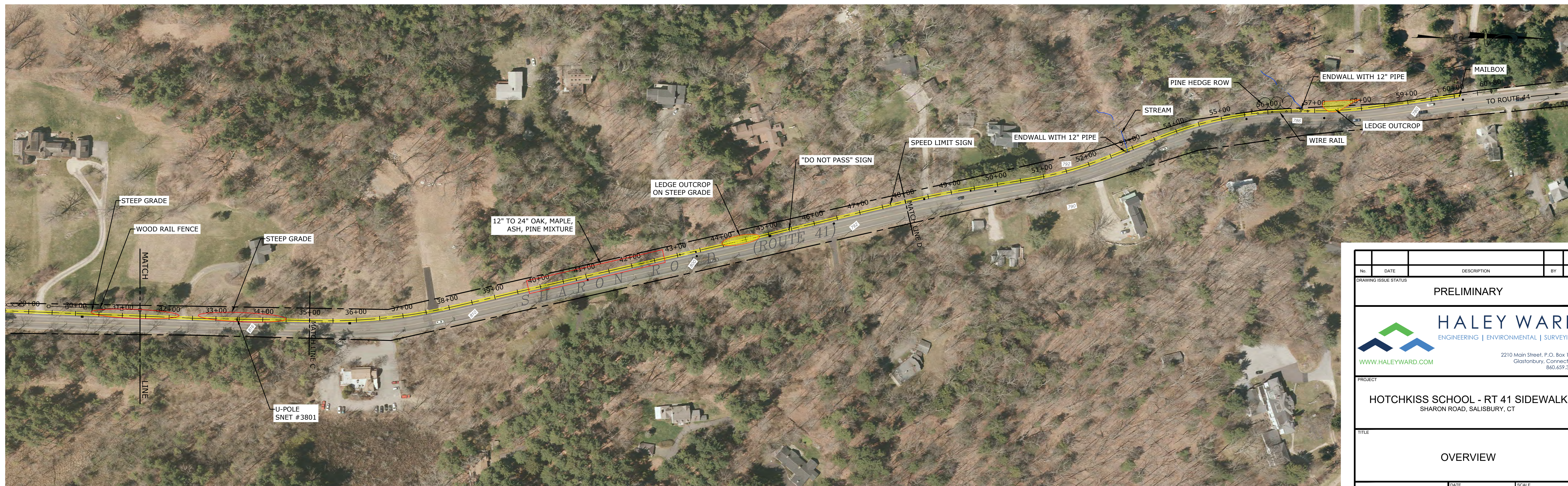
Funding Request: \$ 551,125.00
Total Project: \$ 689,125.00

Your Score

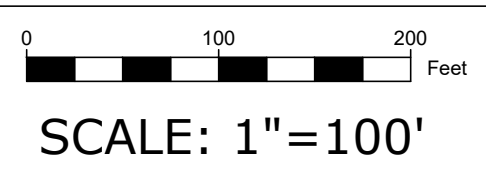
	Point Value	Project Attribute
5	5	Proposal Completion
0	10	Distressed Community
5	5	Budget Development
1	5	Land Type
3	4	Land Access Agreement
8	10	CT Greenways and Trails Connections - Connects AT to Town
10	10	Community Connections
8	10	User Groups Served - Pedestrian & Cycling
10	10	Adherence to Local/Regional/State Plans
10	10	Accessibility / ADA
8	10	Equity / Service
8	8	Environmental / Cultural Review
5	8	Public Participation
3	5	Letters of Support
3	5	Maintenance Plan
	5	Prior Participation CT Recreational Trail Grant Program
5	5	Geographic Distribution
	5	Innovation
92	130	Available Points


Total Score = 92

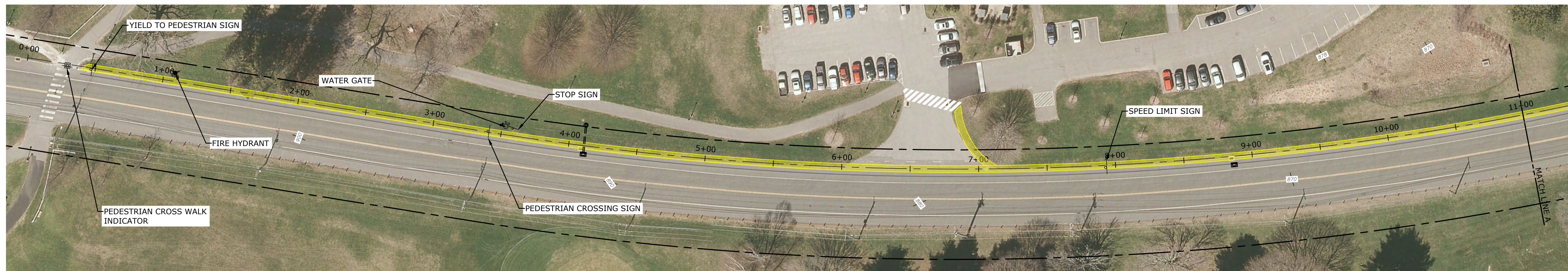
FILE LOCATION: P:\CT\4010251\HOTCHKISS SCHOOL\001 - ROUTE 41 SIDEWALK\GIS MAPPING DWG, 2023.12.01, 8:52 AM



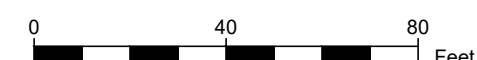
OVERVIEW PLAN



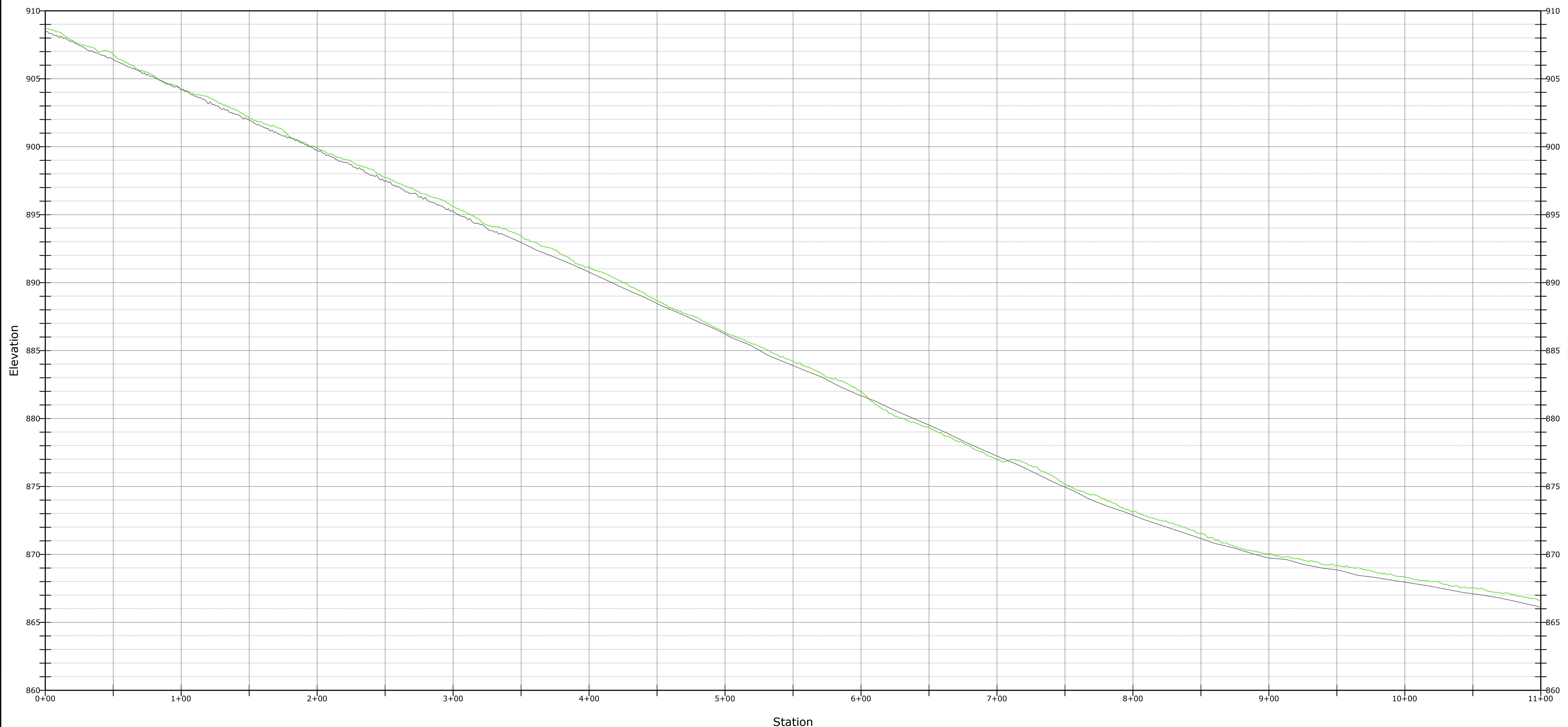
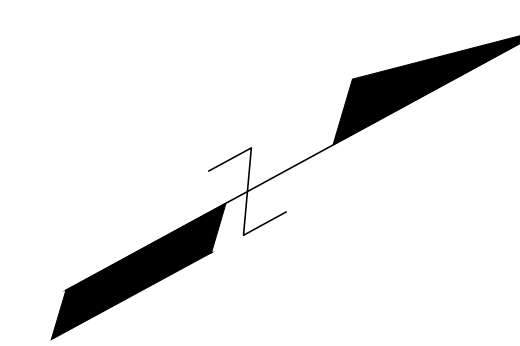
No.	DATE	DESCRIPTION	BY	CHK.	
DRAWING ISSUE STATUS					
PRELIMINARY					
 HALEY WARD ENGINEERING ENVIRONMENTAL SURVEYING WWW.HALEYWARD.COM		2210 Main Street, P.O. Box 1088 Glastonbury, Connecticut 860.659.3100			
PROJECT					
HOTCHKISS SCHOOL - RT 41 SIDEWALK SHARON ROAD, SALISBURY, CT					
TITLE					
OVERVIEW					
DATE		2023.08.30		SCALE	AS NOTED
DRAWN BY	CG	DESIGNED BY		CHECKED BY	DNB
PROJECT No.		4010251.23001			
DRAWING No.		1			



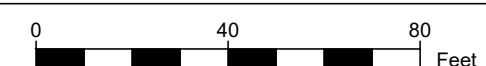
PLAN VIEW



SCALE: 1"=40'




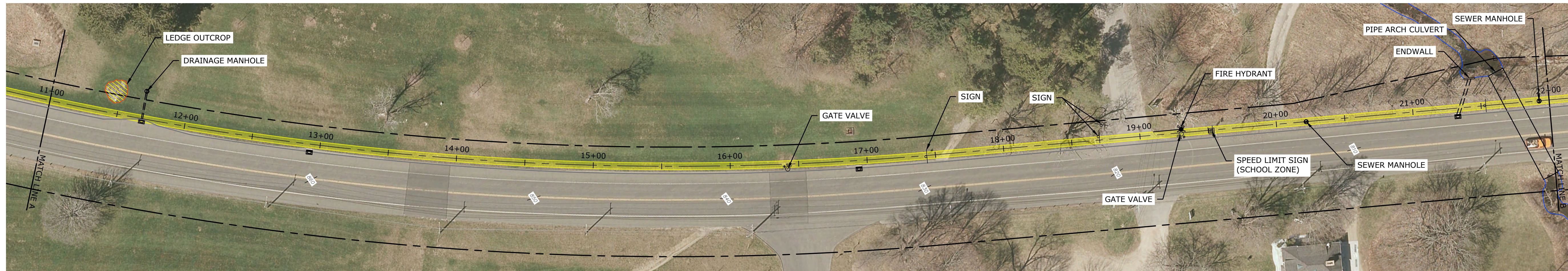
PROFILE - STA. 0+00 - 11+00



HORIZONTAL SCALE: 1"=40'
VERTICAL SCALE: 1"=4'

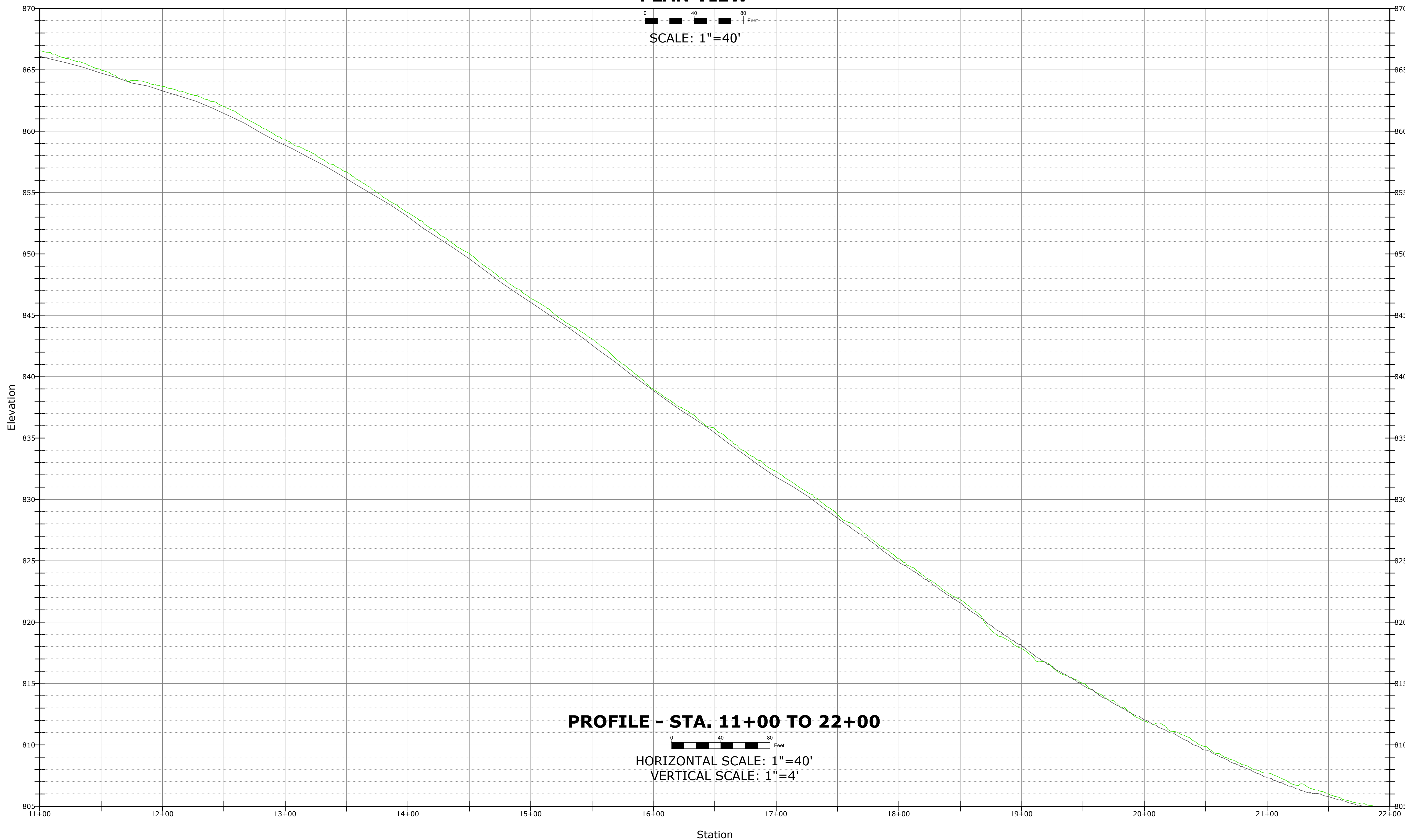
FILE LOCATION: P:\CT\4010251\HOTCHKISS SCHOOL\001 - ROUTE 41 SIDEWALK\02-CAD_FILES\CIVIL\DWG\GIS MAPPING.DWG, 2023.12.01, 8:54 AM

No.	DATE	DESCRIPTION	BY	CHK.
DRAWING ISSUE STATUS				
PRELIMINARY				
 HALEY WARD ENGINEERING ENVIRONMENTAL SURVEYING WWW.HALEYWARD.COM		2210 Main Street, P.O. Box 1088 Glastonbury, Connecticut 860.659.3100		
PROJECT				
HOTCHKISS SCHOOL - RT 41 SIDEWALK SHARON ROAD, SALISBURY, CT				
TITLE				
PLAN AND PROFILE STA. 0+00 TO 11+00				
DATE		2023.08.30	SCALE	
DRAWN BY		CG	AS NOTED	
DESIGNED BY			CHECKED BY	
PROJECT No.		4010251.23001	DNB	
DRAWING No.		2	REV.	



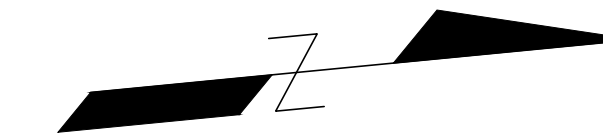
PLAN VIEW

0 40 80 Feet
SCALE: 1"=40'




PROFILE - STA. 11+00 TO 22+00

0 40 80 Feet
HORIZONTAL SCALE: 1"=40'
VERTICAL SCALE: 1"=4'



FILE LOCATION: P:\CT\4010251\HOTCHKISS SCHOOL\001 - ROUTE 41 SIDEWALK\02-CAD_FILES\CIVIL\DWG\GIS MAPPING.DWG, 2023.12.01, 8:56 AM

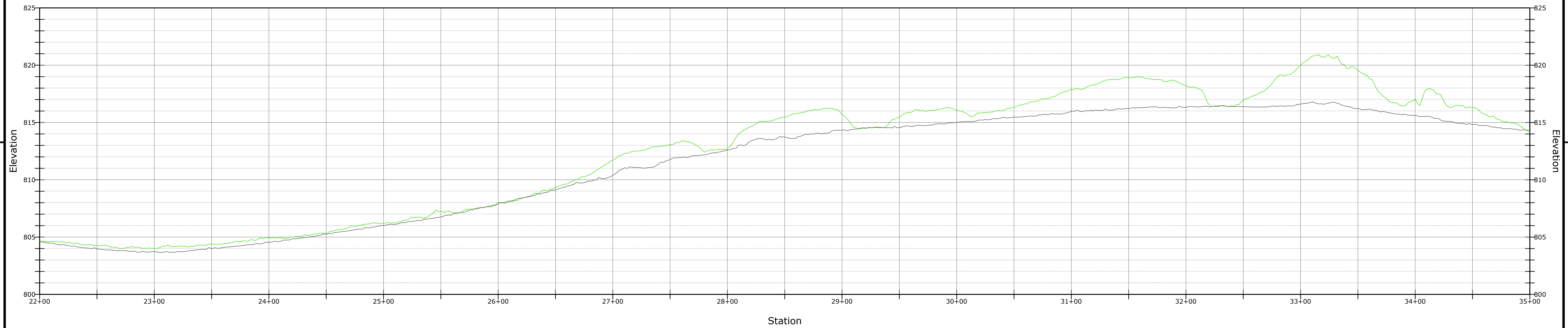
No.	DATE	DESCRIPTION	BY	CHK.
DRAWING ISSUE STATUS				
PRELIMINARY				
 HALEY WARD ENGINEERING ENVIRONMENTAL SURVEYING WWW.HALEYWARD.COM		2210 Main Street, P.O. Box 1088 Glastonbury, Connecticut 860.659.3100		
PROJECT				
HOTCHKISS SCHOOL - RT 41 SIDEWALK SHARON ROAD, SALISBURY, CT				
TITLE				
PLAN AND PROFILE STA. 11+00 TO 22+00				
DATE		2023.08.30	SCALE	
DRAWN BY		CG	AS NOTED	
DESIGNED BY			CHECKED BY	
PROJECT No.		4010251.23001	DNB	
DRAWING No.		3		REV.



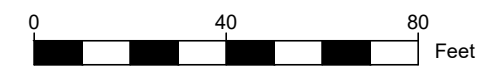
PLAN VIEW



SCALE: 1"=40'




PROFILE - STA. 22+00 TO 35+00



HORIZONTAL SCALE: 1"=40'
VERTICAL SCALE: 1"=4'

FILE LOCATION: P:\CT\4010251\HOTCHKISS SCHOOL\001 - ROUTE 41 SIDEWALK\02-CAD_FILES\CIVIL\DWG\GIS MAPPING.DWG, 2023.12.01, 8:58 AM

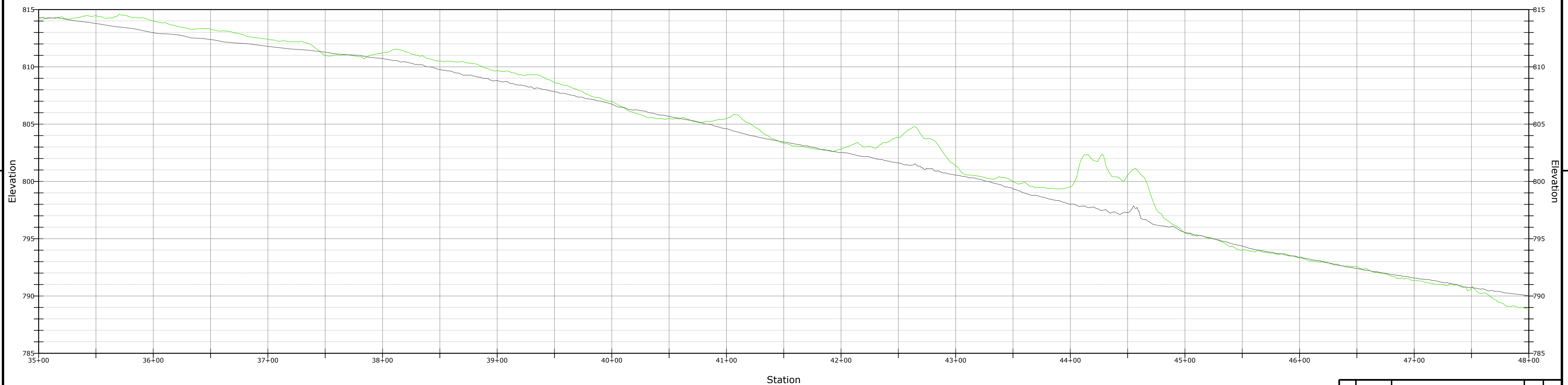
No.	DATE	DESCRIPTION	BY	CHK
DRAWING ISSUE STATUS				
PRELIMINARY				
 HALEY WARD ENGINEERING ENVIRONMENTAL SURVEYING WWW.HALEYWARD.COM		2210 Main Street, P.O. Box 1088 Glastonbury, Connecticut 860.659.3100		
PROJECT				
HOTCHKISS SCHOOL - RT 41 SIDEWALK SHARON ROAD, SALISBURY, CT				
TITLE				
PLAN AND PROFILE STA. 22+00 TO 35+00				
DATE		2023.08.30		SCALE
DRAWN BY		CG		AS NOTED
DESIGNED BY				CHECKED BY
PROJECT No.		4010251.23001		DNB
DRAWING No.		4		REV.



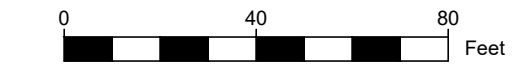
PLAN VIEW



SCALE: 1"=40'




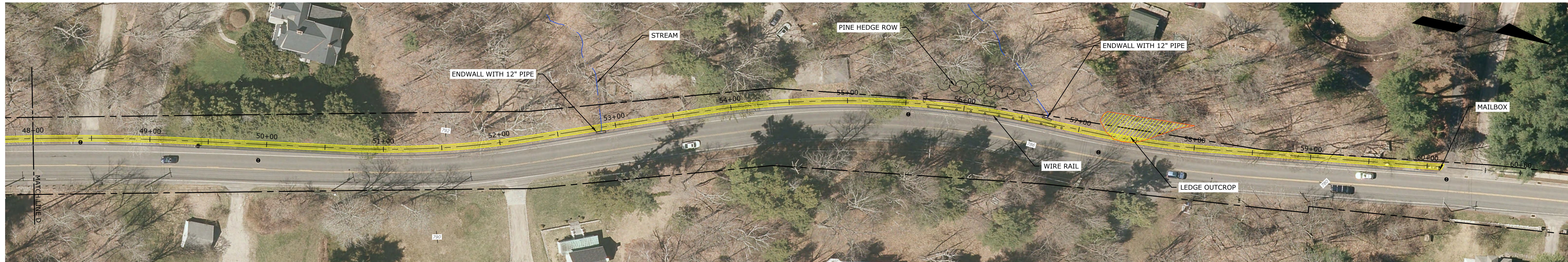
PROFILE - STA. 35+00 TO 48+00



HORIZONTAL SCALE: 1"=40'
VERTICAL SCALE: 1"=4'

FILE LOCATION: P:\CT\4010251\HOTCHKISS SCHOOL\001 - ROUTE 41 SIDEWALK\02-CAD_FILES\CIVIL\DWG\GIS MAPPING.DWG, 2023.12.01, 9:01 AM

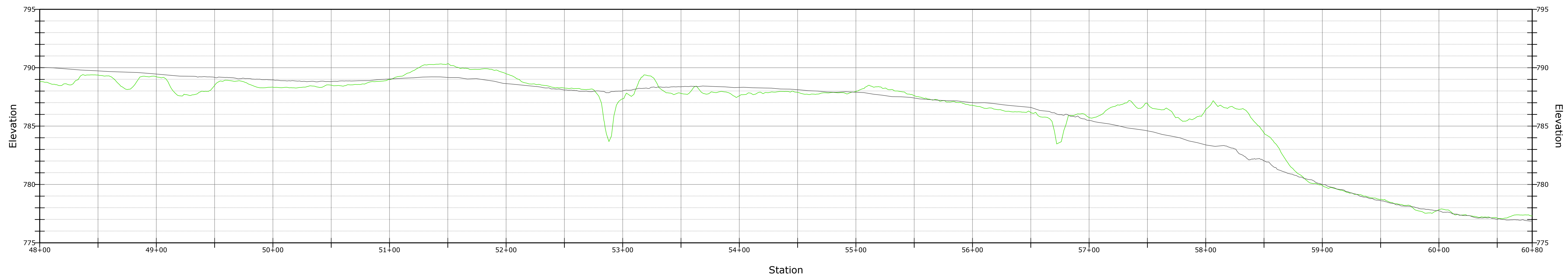
No.	DATE	DESCRIPTION	BY	CHK.
DRAWING ISSUE STATUS				
PRELIMINARY				
 HALEY WARD ENGINEERING ENVIRONMENTAL SURVEYING WWW.HALEYWARD.COM		2210 Main Street, P.O. Box 1088 Glastonbury, Connecticut 860.659.3100		
PROJECT				
HOTCHKISS SCHOOL - RT 41 SIDEWALK SHARON ROAD, SALISBURY, CT				
TITLE				
PLAN AND PROFILE STA. 35+00 TO 48+00				
DATE		2023.08.30		SCALE
				AS NOTED
DRAWN BY	DESIGNED BY	CHECKED BY		
CG		DNB		
PROJECT No.				
4010251.23001				
DRAWING No.				REV.
5				



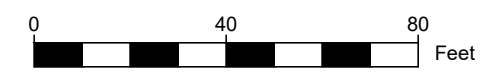
PLAN VIEW



SCALE: 1"=40'




PROFILE - STA. 35+00 TO 48+00



HORIZONTAL SCALE: 1"=40'
VERTICAL SCALE: 1"=4'

FILE LOCATION: P:\CT\4010251\HOTCHKISS SCHOOL\001 - ROUTE 41 SIDEWALK\K02-CAD_FILES\CIVIL\DWG\GIS MAPPING.DWG, 2023.12.01, 9:03 AM

No.	DATE	DESCRIPTION	BY	CHK
DRAWING ISSUE STATUS				
PRELIMINARY				
 HALEY WARD ENGINEERING ENVIRONMENTAL SURVEYING <small>2210 Main Street, P.O. Box 1088 Glastonbury, Connecticut 06033 860.659.3100</small>				
PROJECT				
HOTCHKISS SCHOOL - RT 41 SIDEWALK SHARON ROAD, SALISBURY, CT				
TITLE				
PLAN AND PROFILE STA. 48+00 TO 60+80				
DATE		2023.08.30		SCALE
				AS NOTED
DRAWN BY	DESIGNED BY	CHECKED BY		
CG		DNB		
PROJECT No.				
4010251.23001				
DRAWING No.				REV.
5				